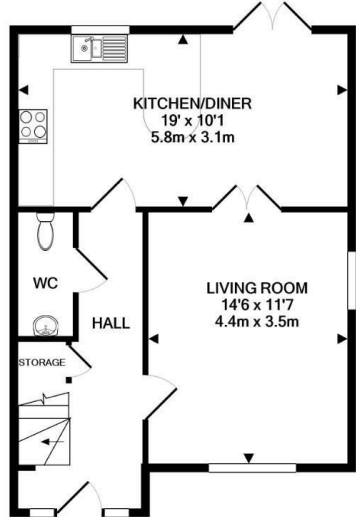


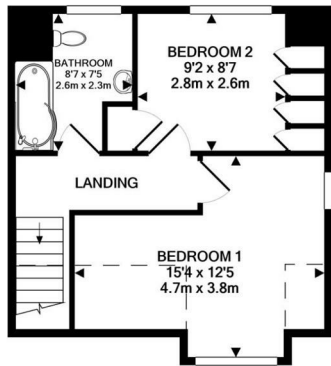


**Keith
Ashton**

Stocks Lane, Kelvedon Hatch
Brentwood



GROUND FLOOR
APPROX. FLOOR
AREA 486 SQ.FT.
(45.1 SQ.M.)



1ST FLOOR
APPROX. FLOOR
AREA 366 SQ.FT.
(34.0 SQ.M.)



28a Stocks Lane, Kelvedon Hatch, Brentwood, CM15 0BL

** ONLINE VIEWING AVAILABLE ** A beautiful, two bedroom end of terrace home, offering the option, via modern glass doors, to have a large open plan living space from lounge to kitchen / diner. This home is neutrally decorated, low maintenance and benefits from off street parking for up to three vehicles and a West facing sunny garden.

The home is just a very short walk away from; local primary school, village shop and bus route leading into Brentwood High Street, where you will find a range of restaurants and shops as well as the mainline station which takes you into London.

£385,000



Energy Efficiency Rating		Environmental Impact (CO ₂) Rating	
Current	Potential	Current	Potential

SERVICES:

Local Authority: Brentwood
Council tax band:
Post code: CM15 0BL

VIEWING:

Strictly by prior arrangement with Keith Ashton Estate Agents

OPENING HOURS:

Monday to Friday: 8.45AM - 6.30PM | Saturdays: 9AM - 5.30PM | Sundays: 10AM - 2PM

MORTGAGE INFORMATION:

We offer the additional facility of an in-house Independent Financial Adviser who will access all mortgage lenders with the purpose of providing you with the benefit of choice. For quotations or comparables please call 01277 375757 or visit our interactive website at www.mortgagebusiness.net



We the Agent have not tested any apparatus, fittings or services for this property. The plot size is intended merely as a guide and has not been officially measured or verified by the Agent. Photographs are for illustration only and may depict items which are not for sale or included in the sale of the property. As part of the service we offer we may recommend ancillary services to you which we believe may help you with your property transaction. We wish to make you aware, that should you decide to use these services we will receive a referral fee. For full and detailed information please visit 'terms and conditions' on our website www.keithashton.co.uk

Brentwood
Tel. 01277 260858

Village Office
Tel. 01277 375757

Lettings Office
Tel. 01277 202200

Explore more @ www.keithashton.co.uk

